



MONTHLY MEMBERSHIP PROGRESS REPORT

District 324A1

Results as of: 5/31/2014

GMT: M NAGARAJAN

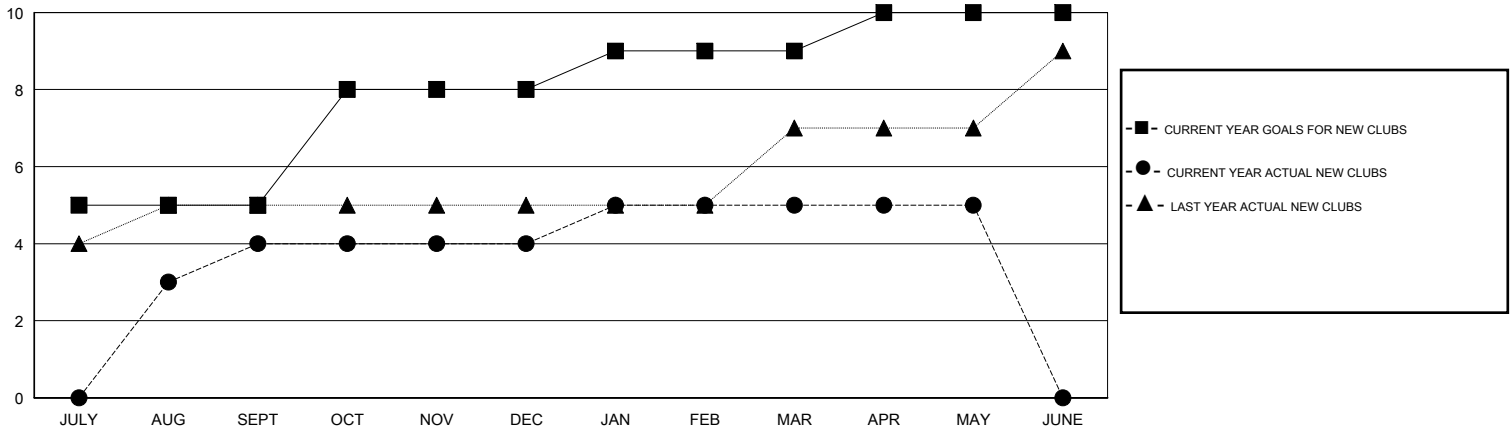
LOCATION INDIA

GMT CA 6

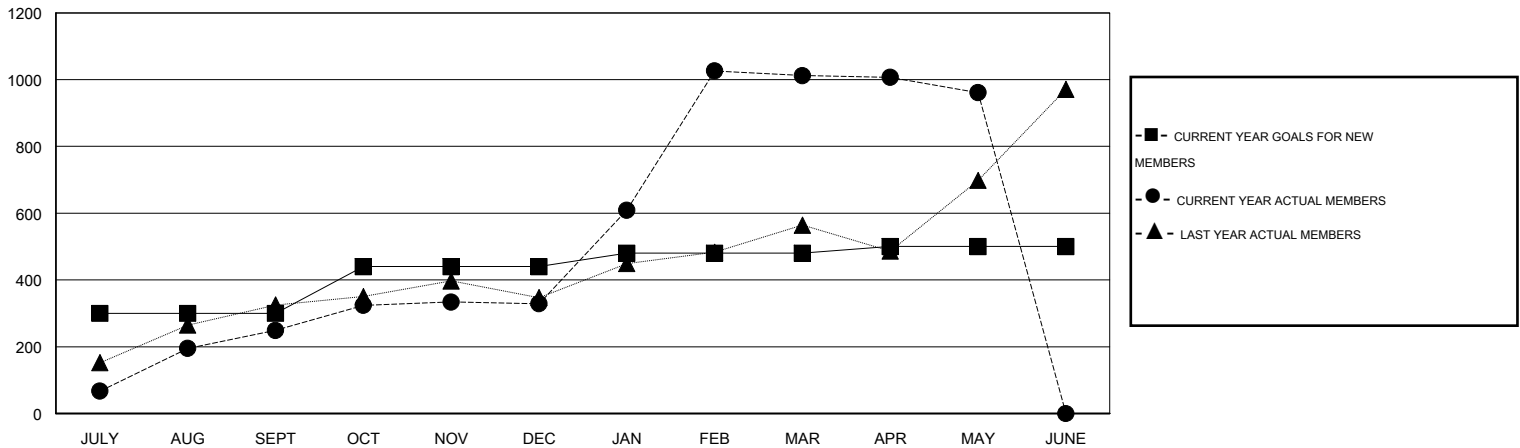
| Clubs | | | | |
|-----------------------|---------------|------------------|----------------------|----------------------|
| RESULTS FOR 2013-2014 | | | | |
| QUARTER | NEW CLUB GOAL | ACTUAL NEW CLUBS | ACTUAL DROPPED CLUBS | ACTUAL NET GAIN/LOSS |
| JULY/AUG/SEPT | 5 | 4 | 0 | 4 |
| OCT/NOV/DEC | 3 | 0 | 0 | 0 |
| JAN/FEB/MAR | 1 | 1 | 0 | 1 |
| APR/MAY/JUNE | 1 | 0 | 0 | 0 |

| Members | | | | |
|-----------------------|-----------------|----------------------------|------------------------|----------------------|
| RESULTS FOR 2013-2014 | | | | |
| QUARTER | NEW MEMBER GOAL | ACTUAL TOTAL MEMBERS ADDED | ACTUAL DROPPED MEMBERS | ACTUAL NET GAIN/LOSS |
| JULY/AUG/SEPT | 300 | 375 | 126 | 249 |
| OCT/NOV/DEC | 140 | 183 | 103 | 80 |
| JAN/FEB/MAR | 40 | 751 | 68 | 683 |
| APR/MAY/JUNE | 20 | 91 | 142 | -51 |

GOALS AND ACTUAL NEW CLUBS CUMULATIVE



GOALS AND ACTUAL MEMBERS CUMULATIVE



| |
|------------------|
| DROPPED CLUBS: 0 |
|------------------|

125 CLUBS OF 153 ADDED 1 OR MORE NEW MEMBERS

| GENDER DISTRIBUTION | |
|---------------------|----------------|
| MALE | 4,646 (63.76%) |
| FEMALE | 2,641 (36.24%) |

| DROPPED MEMBERS | |
|-----------------|------------|
| DECEASED | 11 |
| CLUB CANCELLED | 0 |
| OTHER | 428 |
| TOTAL | 439 |

[CLICK HERE FOR HEALTH ASSESSMENT DATA](#)

| | |
|-----------------------|-------|
| FAMILY UNIT MEMBERS | 1,527 |
| HEAD OF HOUSEHOLD | 726 |
| NON-HEAD OF HOUSEHOLD | 801 |